

Muster Box

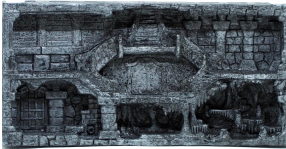


Display your game miniatures as art

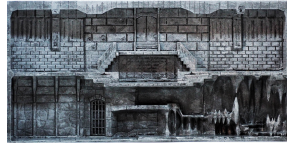
You spend hours painting your game miniatures and you are justifiably proud of them. But then they go back in storage and you only take them out to play once in a while. Muster Boxes gives you a picture frame style display case to show off your hard work and mad painting skills.

Muster Box

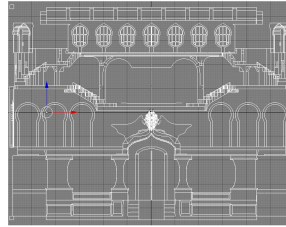
www.muster-box.com



Seeker's Strike



Double Dungeon



Manticore Manor

tbd

tbd

tbd

tbd

Muster Box Setup

Each Muster Box insert has 'ferrous' paint applied to the 'floor' surfaces to provide attachment force for magnetic tape. Apply the magnetic tape to your miniatures by removing the backing and affixing the sticky side to the bottom of the base of each of your miniatures. If the miniature is stable (with a larger square or round base) then a trimmed section of magnetic tape should do the trick. If the miniature base is smaller, or narrow, you can apply a larger section of magnetic tape to improve both stability and magnetic attraction. The magnetic connection is only sufficient for stability and will not support the full weight of most miniatures.

Arrange your miniatures to suit your needs and interests. Make sure the placement of each miniature is fully within the insert and that the base is in full contact with the 'floor' of the insert. Place the Plexiglas into the frame, and then carefully place the frame around the insert. Fasten the velcro straps to hold the insert in place and hang the Muster Box on your wall.

Manticore Manor Framing Info

Disclaimer: Due to variations in production and finishing, the following information should be verified before you proceed with any of the framing options. For best results, consult a local frame shop.

Insert Dimensions	<u>Dimension</u>	<u>Imperial</u>	<u>Metric</u>
	Height	9 inches	228 MM
	Width	12 inches	304 MM
	Depth	1.5 inches	38 MM

Frame Recommendations	<u>Dimension</u>	<u>Imperial</u>	<u>Metric</u>
	Opening Height	9 inches	228 MM
	Opening Width	12 inches	304 MM
	Allowance	1/8 inch	4 MM
	Rabbet	1.5 inches	38 MM

Painting Info

For best results, use the paint that you are most familiar with. The Muster Box insert is already primed and ready to paint with acrylic or other hobby paints. Thick or multiple layers on the 'floor' surfaces will dramatically reduce the effect of the base magnets; so only light layers or 'washes' are recommended. Allow all paint to dry thoroughly before positioning miniatures or framing.